

FLEX - PLUS 2500-4000

Led Strip



Alimentazione / Operating Voltage	24 V
Potenza / Power	22 W/mt
Larghezza Pcb / Width Pcb	12 mm
Altezza / Height Stripe	2 mm
Lunghezza / Length Stripe	5000 mm
Taglio segmento/ Length per Cut	56 mm
N° LED	126 / mt
IP	20
Temperatura esercizio Storage Temperature	- 30° C - + 70°C
Lifetime	L70B20 50000H

	Flusso Luminoso Luminous Flux	Efficienza Efficiency	Colore Luce Led Color
DA-PLUS-2500-4000	2085 lm/mt	135 lm/W	3000 K



Via Cadorna, 40/42
20032 Cormano (MI)
Tel. +39 02 84269630
Fax +39 02 84269631
info@dadalighting.com
www.dadalighting.com

FLEX - PLUS 2500-4000

Led Strip

Light efficiency:

95 Lumen/Watt

Output: 2085 lm

Light quality:

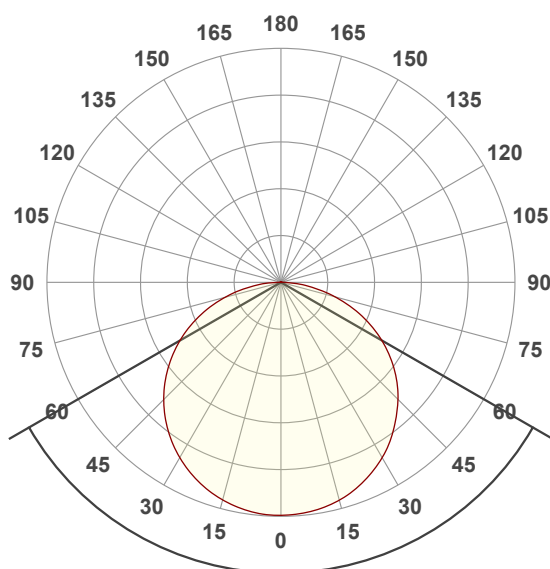
CRI: 97,2

Peak: 661 cd

Color temperature:

4222 K

Power: 22,0 W
24,0V @ 0,917A



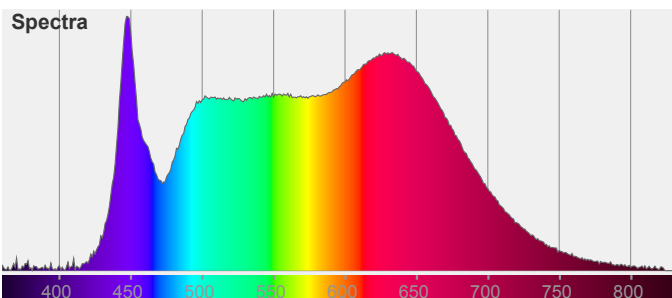
Beam angle

120,1°

Color

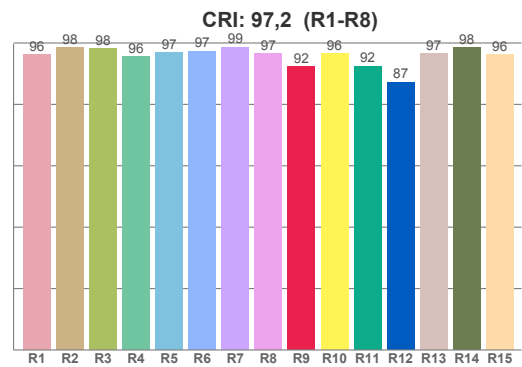
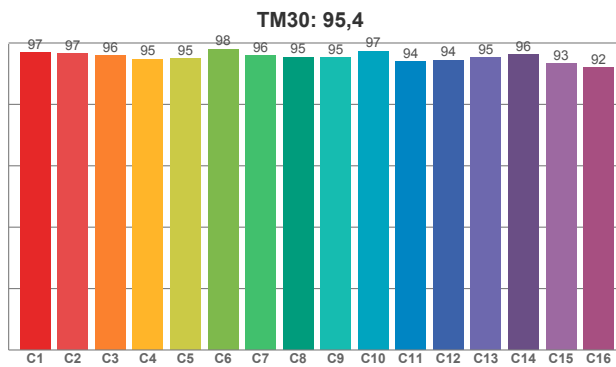
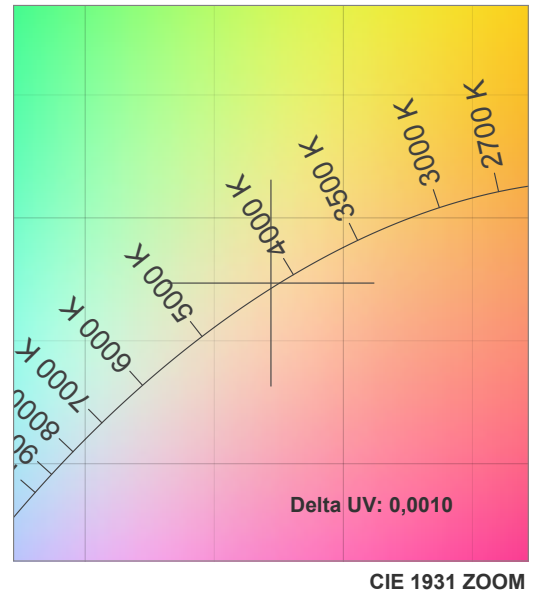
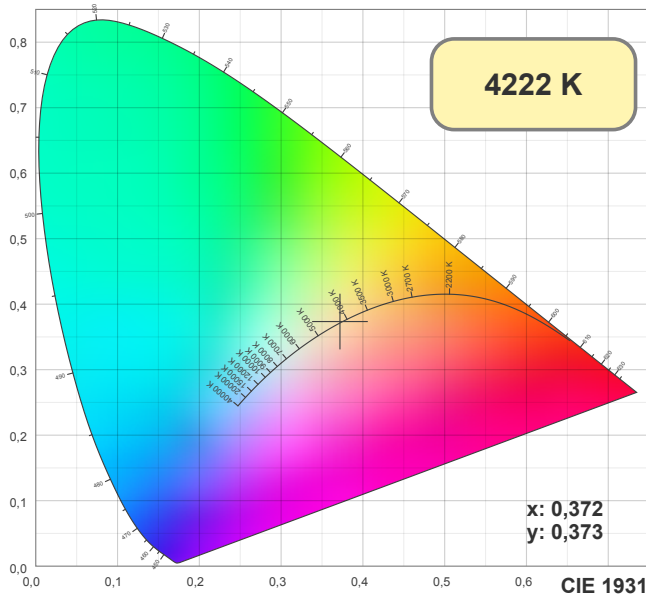


CIE1931
x: 0,372
y: 0,373



FLEX - PLUS 2500-4000

Led Strip



CRI R values, only R1-R8 are used to calculate final CRI value

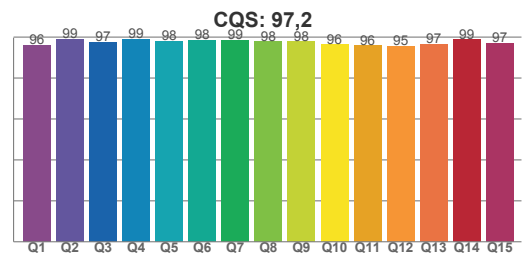
R1	R2	R3	R4	R5	R6	R7	R8	R9	R10	R11	R12	R13	R14	R15
96,25	98,43	98,09	95,61	96,86	97,32	98,66	96,54	92,31	96,46	92,41	87,25	96,51	98,46	96,16

TM30 C values, 16 binned values out of total of 99 C values

C1	C2	C3	C4	C5	C6	C7	C8	C9	C10	C11	C12	C13	C14	C15	C16
96,78	96,55	95,89	94,75	94,98	97,95	95,81	95,38	95,31	97,39	93,98	94,44	95,17	96,12	93,27	91,96

CQS Q values

Q1	Q2	Q3	Q4	Q5	Q6	Q7	Q8	Q9	Q10	Q11	Q12	Q13	Q14	Q15
95,89	98,82	97,34	99,09	98,12	98,42	98,62	97,80	97,77	96,36	95,81	95,44	96,52	98,72	97,08

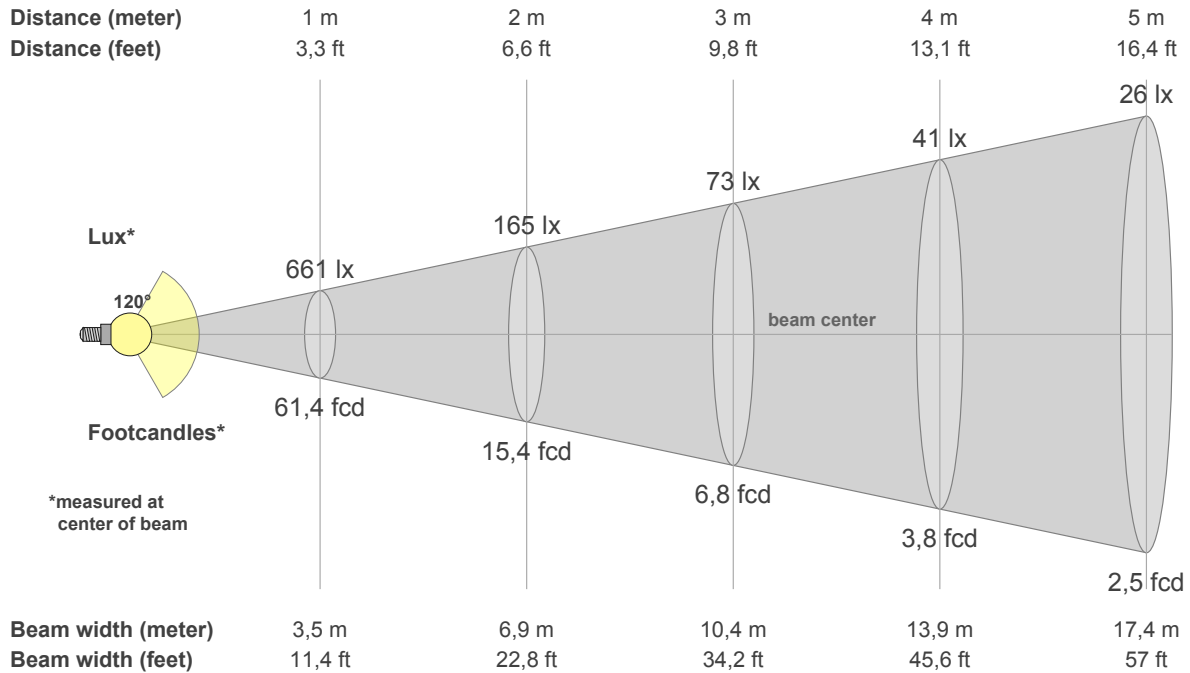


Color parameters

CCT	CRI	CRI R9	TM30 Rf	TM30 Rg	CQS	x	y	u	v	Duv
4222 K	97,2	92,3	95,4	101,4	97,2	0,4	0,4	0,2	0,3	0,0011

FLEX - PLUS 2500-4000

Led Strip



Intensities in 0° c-plane

0°	5°	10°	15°	20°	25°	30°	35°	40°	45°	50°	55°	60°	65°	70°	75°	80°	85°	90°	95°
661	659	653	640	623	602	575	543	508	470	428	382	331	276	219	160	103	53	12	5
100%	100%	99%	97%	94%	91%	87%	82%	77%	71%	65%	58%	50%	42%	33%	24%	16%	8%	2%	1%

Intensities in 0° c-plane

0°	5°	10°	15°	20°	25°	30°	35°	40°	45°	50°	55°	60°	65°	70°	75°	80°	85°	90°	95°
661	659	653	640	623	602	575	543	508	470	428	382	331	276	219	160	103	53	12	5
100%	100%	99%	97%	94%	91%	87%	82%	77%	71%	65%	58%	50%	42%	33%	24%	16%	8%	2%	1%

Intensities in 180° c-plane

0°	5°	10°	15°	20°	25°	30°	35°	40°	45°	50°	55°	60°	65°	70°	75°	80°	85°	90°	95°
661	660	652	639	623	601	574	544	510	470	428	382	331	278	223	165	110	57	19	4
100%	100%	99%	97%	94%	91%	87%	82%	77%	71%	65%	58%	50%	42%	34%	25%	17%	9%	3%	1%

Intensities in 180° c-plane

0°	5°	10°	15°	20°	25°	30°	35°	40°	45°	50°	55°	60°	65°	70°	75°	80°	85°	90°	95°
661	660	652	639	623	601	574	544	510	470	428	382	331	278	223	165	110	57	19	4
100%	100%	99%	97%	94%	91%	87%	82%	77%	71%	65%	58%	50%	42%	34%	25%	17%	9%	3%	1%

Beam angle 50%	Field angle 10%	Cutoff angle 2,5%	Intensity ratio in 120° cone	Intensity ratio in 90° cone
120,1°	167,4°	179,8°	75,1%	50,0%